



**GWM**

**HAVAL**



THE NEXT GENERATION **H6**.  
A **SYMPHONY** OF MOMENTS.

# INNOVATION THAT INSPIRES.

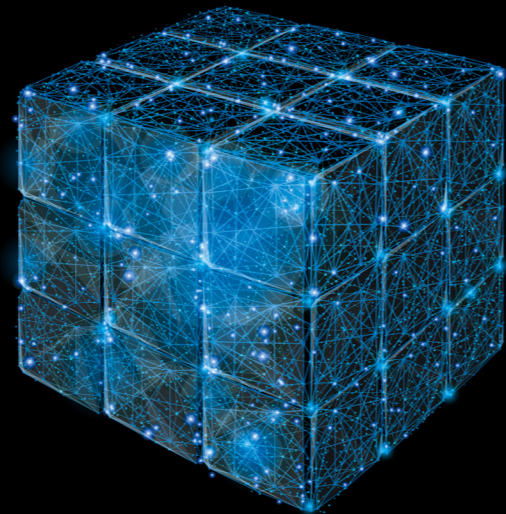
## Global High-Intelligent Modular Technology Platform

The new generation Haval H6 is built using a global high-intelligent and modular technology platform; what that means for you and your family is a smarter, safer, more versatile and connected driving experience. This compelling evolution of technology, with its lightweight design, gives you advanced power, more comfort, reduced NVH (noise, vibrations, and harshness) and lower fuel consumption.



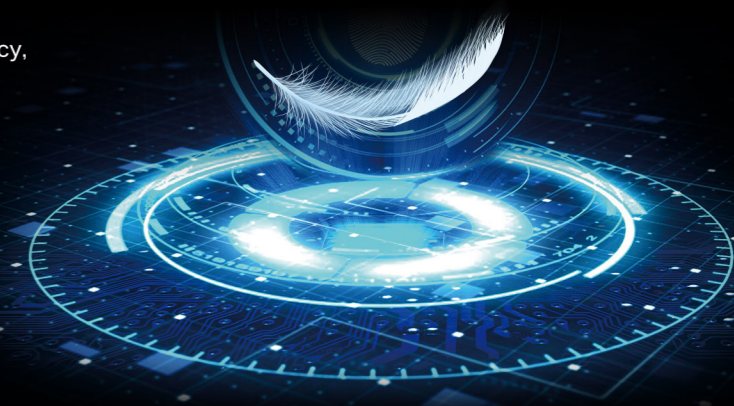
### High extensibility, endless possibilities

Elevate your travel experience with the HAVAL H6's diverse power adaptation capabilities. The high extensibility means that you have a selection of power modes, powertrain solutions and transmissions.



### The ultimate lightweight performance

The HAVAL H6 is significantly lighter, giving you a 14.5% increase in fuel efficiency, making it the perfect SUV for those family adventures.



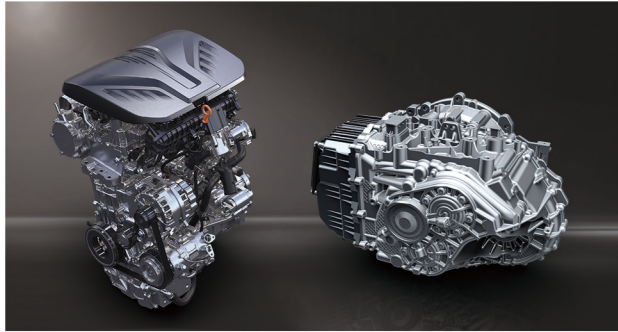
### A seamless performance, in every direction

The evolution and modernization of the HAVAL H6 performance offers your refined versatility, no matter the adventure. Sporting over 6 million kilometres of rigorous road tests. 18 kinds of global environmental applications ensure true adaptability and excellent responsiveness for a more extraordinary drive.



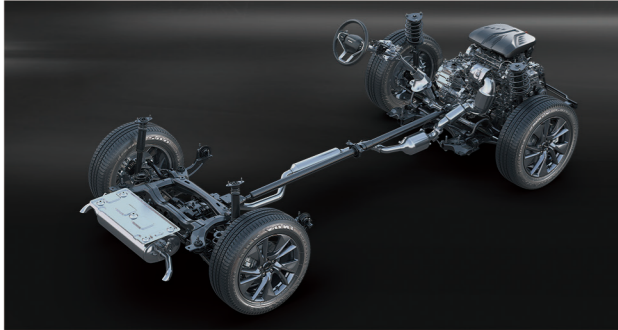


THE ART OF FAMILY MOMENTS



2.0GDIT Gasoline

7DCT



Front Macpherson rear multi-link independent suspension + AWD

## The finest SUV performance technology.

Beyond its luxuriously good looks, the refined Haval H6 boasts a powerful 2.0 GDIT engine with a series of advanced innovations such as a Miller cycle, electronic water pump, 12:1 high compression ratio, and a thermal efficiency of up to 38%. All of which reduces fuel consumption and emissions but still delivers remarkable performance.

The mighty 2.0L engine delivers a power output of 150kW, between 6,000 - 6,300 r/min, and a peak torque of 320Nm, between 1,500 - 4,000 r/min.

Enjoy reduced throttle response time by 200ms and improved gear-shift efficiency by 100ms with the innovative, second-generation 7DCT.

The intelligent AWD system transforms your driving experience with a seamless transient response and torque distribution, allowing the front and rear axles to operate at a 50/50 ratio.

The H6 features All-terrain management which allows for maximum traction & stability in tougher driving conditions and in different terrains.





6-109

BLACKHAT-TATTOO  
AM10:00-PM22:00



TATTOO



TATTOO



HAVAL H6

FANCHA

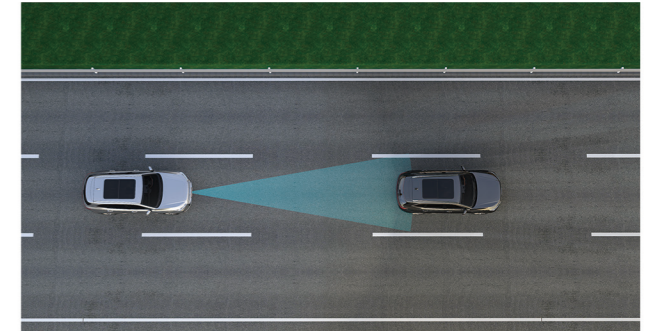
IN FOREST

A NEW GENERATION OF REFINEMENT



## Intelligent mobility.

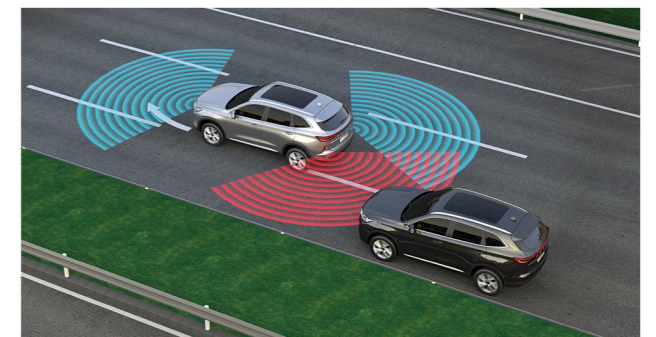
Every detail of the Haval H6 has been crafted to be responsive and efficient, giving you extra peace of mind. Boasting Level 2 advanced automatic driver assistance like Traffic Sign Recognition (TSR), Lane-Keeping Assist, Adaptive Cruise Control and more.



ACC+ ICA (Intelligent Cruise Assistance) +TAJ (Traffic Jam Assistance)



TSR(Traffic Sign Recognition)



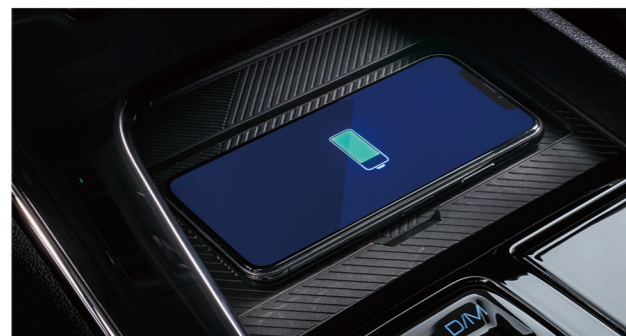
LKA(Lane-keeping Assistance)

## Be connected and in control.

At the heart of the Haval H6 is a tech-savvy infotainment system that turns any task into a small tap on a screen. No matter where the journey takes you, stay connected to the outside world with a convenient wireless smartphone charger, CarPlay and Android Auto.



Carplay & Android auto



Wireless Charge





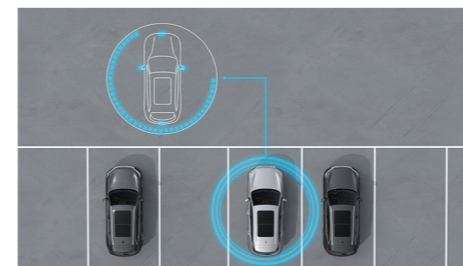
**SOPHISTICATED SAFETY INNOVATION BUILT AROUND YOU**





## Premium peace-of-mind.

The Haval H6 boasts an intelligent suite of safety features, so you can spend more time enjoying the journey. Cruise with confidence in every direction with Autonomous Emergency Braking, Adaptive Cruise Control, Lane-Keep Assist and Rear Cross-Traffic Alert.



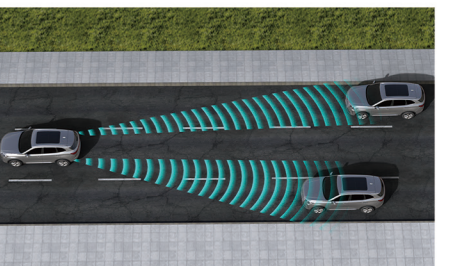
360° AVM (Around View Monitor System)



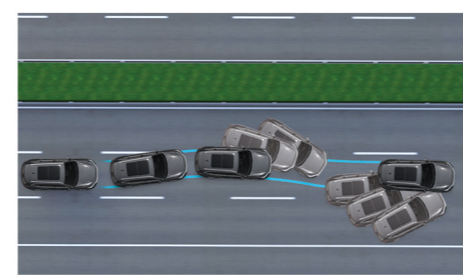
Rear Cross Traffic Alert



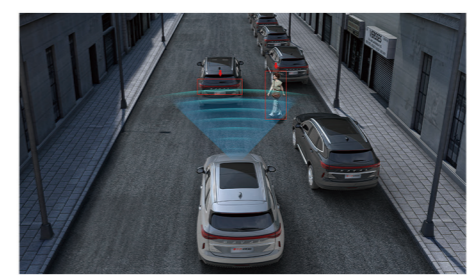
Smart Collision Avoidance



Lane Change Assist



9.3 Electronic Stability Program (ESP)



Autonomous Emergency Braking (AEB)



6 Omni-directional Airbags



71.61% High-strength Steel Body



**ENGINEERED TO MOVE YOU**

# Signature sophistication.

Inspired by a fusion design of Asian and European influences, every design detail has been fine-tuned and crafted with a purpose and sense of sophisticated elegance.



A fusion design of Asian and European influences



Fangsheng Pattern Grille (Double Auspice Pattern)



Classic Body Waist Line



Vivid Body Proportion



Rising Flame LED Headlamp



Horizon Rear LED Taillight



19-inch Vortex Wheel Hub



18-inch Astrolabe Wheel Hub





**TAILORED FOR ANY MOMENT**



## Luxury craftsmanship. Redefined.

From the power-adjustable, heated front seats beneath the spectacular panoramic sunroof, it's impossible to deny that the Haval H6 offers unparalleled comfort to both drivers and passengers.



10 Speaker Sound System



10.25-inch Virtual Instrument



12.3-inch Ultra-smart Touch Screen



High Gloss Electroplating Rotary Shift



Front Seat Heating



Auto Lift Tailgate



Panoramic Sunroof



Driver 6 Way Power Adjustable Seat with 2 Way Power Adjustable Lumbar Support

## Body Color



1. Ayers Grey
2. Red
3. Hamilton White
4. Messiah Brown
5. Green
6. Atlantis Blue
7. Black

## Interior Color



Black interior



Black and red interior



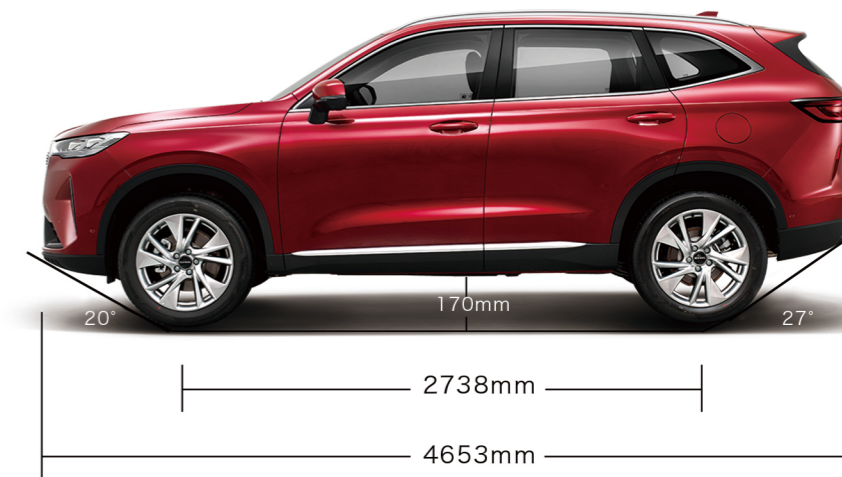
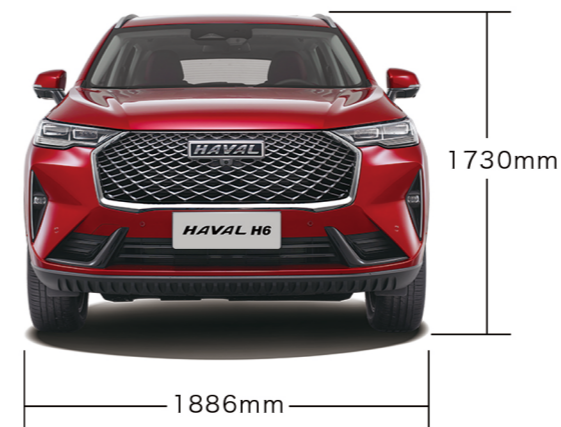
Black and grey interior



Black and brown interior

\*Black interior will be standard for all models, all other interior colours are optional and will have a 3-4 month waiting period.

## Body Size



The minimum ground clearance, approach angle and departure angle are the quiescent values under technical conditions.

Engine	2.0 Turbo			
Maximum Power (kW/rpm)	150/6000-6300			
Maximum Torque (kW/rpm)	320/1500-4000			
Overall Dimensions- Length X Width X Height (mm)	4653 x 1886 x 1730			
Ground Clearance	170mm			
Transmission	7DCT			
<b>Drivetrain</b>	<b>2WD</b>		<b>4WD</b>	
<b>Grade</b>	<b>Premium</b>	<b>Luxury</b>	<b>Luxury</b>	<b>Super Luxury</b>
<b>Steering And Driving Dynamics</b>				
Electronic Parking Brake (EPB)	•	•	•	•
Auto Hold	•	•	•	•
Smart Start-stop	•	•	•	•
Tilt & Telescopic Steering	•	•	•	•
Front Mcpherson & Rear Multi-link Suspension	•	•	•	•
Driving Mode (Standard, Eco, Sports, Snow)	•	•	×	×
Driving & Terrain Modes (Standard, Eco, Sports, Snow, Sand, Offroad)	×	×	•	•
Torque On Demand (TOD) Awd System	×	×	•	•
Dynamic Steering Modes (Sport, Comfort, Light)	•	•	•	•
Speed Sensitive Electric Steering	•	•	•	•
Cruise Control	•	×	×	×
<b>Exterior Specification</b>				
225/60 R18 Alloy Wheels	•	•	•	×
225/55 R19 Alloy Wheels	×	×	×	•
Auto Lift Tailgate	×	×	×	•
Panoramic Sunroof	×	•	•	•
Roof Rails	×	•	•	•
<b>Interior Specification</b>				
Rain-sensing Wipers	•	•	•	•
Wireless Charger	×	×	×	•
Leather Steering Wheel	•	•	•	•
Keyless Entry & Push Button Start	•	•	•	•
Heated Front Seats	×	×	×	•

	2WD		4WD	
	Premium	Luxury	Luxury	Super Luxury
Vanity Mirrors (Driver And Passenger)	•	•	•	•
Paddle Shift	•	•	•	•
Front 12v Power Outlet	•	•	•	•
Rear Luggage 12v Power Outlet	×	×	×	•
Dashcam Power Outlet	×	•	•	•
10.25 Inch Color Combination Instrument	•	•	•	•
Leather Seats	•	•	•	•
Driver Seat 6 Way Electric Adjust	•	•	•	•
Passenger Seat 4 Way Manual Adjust	•	•	•	×
Driver Lumbar Support 2 Way Electric Adjust	×	×	×	•
60:40 Split With Folding Rear Seats	•	•	•	•
<b>Safety And Security</b>				
6 Airbags: Dual + Side + Curtain Airbags	•	•	•	•
Child Safety Lock & Isofix	•	•	•	•
Electronic Stability System (ESC) & Traction Control (TCS)	•	•	•	•
Anti-roll System (RMI) + Secondary Collision Mitigation (SCM)	•	•	•	•
Cornering Brake Control (CBC) & Brake Assist (BA)	•	•	•	•
Hill Decent (HDC) & Uphill Assist (HHC)	•	•	•	•
Tire Pressure Monitoring System (TPMS)	•	•	•	•
Front Parking Sensors (2)	×	•	•	•
Rear Parking Sensors (4)	•	•	•	•
Reverse Camera With Guidelines	•	×	×	×
360 Degree Camera With Panoramic View	×	•	•	•
Adaptive Cruise Control (ACC) With Intelligent Cruise, Intelligent Cornering & Traffic Jam Assist	×	•	•	•
Pre-collision Warning & Automatic Emergency Braking (AEB Pedestrian And Cyclist)	×	•	•	•
Lane Departure Alert (LDW), Lane Keeping Assist (LKA) And Lane Centre Keeping (LCK)	×	•	•	•
Traffic Sign Recognition (TSR)	×	•	•	•
Blind Spot Detection With Rear Cross Traffic Alert And Lane Change Assist	×	×	×	•



	2WD		4WD	
	Premium	Luxury	Luxury	Super Luxury
Head-Up Display	×	×	×	•
Driver Fatigue Alert	•	•	•	•
Anti-Theft Alarm System	•	•	•	•
<b>Infotainment</b>				
Radio With FM/AM	•	•	•	•
10.25" Color Multi-touch Screen	•	×	×	×
12.3" Color Multi-touch Screen	×	•	•	•
Front & Rear Dual USB Ports	•	•	•	•
Bluetooth Connectivity	•	•	•	•
6 Speaker: 2 Trebles,2 Bass & 2 Full Range	•	•	•	×
10 Speaker: 4 Trebles,4 Bass & 2 Full Range	×	×	×	•
Speed Sensitive Volume Control	•	•	•	•
Carplay & Android Auto	•	•	•	•
<b>Glass And Mirror</b>				
Green Glass	•	•	•	×
Rear Privacy Glass	×	×	×	•
Manual Anti-glare Mirror	•	×	×	×
Electronic Anti-glare Inside Mirror	×	•	•	•
Driver's Window One Touch Up/Down	•	×	×	×
All Windows One Touch Up/Down	×	•	•	•
Remote Window Close Function	×	•	•	•
Heated Exterior Mirror	×	×	×	•
Electrically Adjustable Exterior Mirror	•	•	•	•
Electrically Retractable Exterior Mirror	×	•	•	•
<b>Lighting</b>				
Led Headlights & Taillamps	•	•	•	•
Electric Height-adjusting Headlights.	•	•	•	•
Automatic Headlights + Follow Me Home	•	•	•	•
Front Fog Lamp (LED)	•	•	•	•
Rear Fog Lamp (LED)	•	•	•	•
Daytime Running Lamps (LED Integrated)	•	•	•	•

	2WD		4WD	
	Premium	Luxury	Luxury	Super Luxury
<b>Air Conditioner</b>				
Single Zone Aircon	•	×	×	×
Automatic Dual Zone Aircon	×	•	•	•
Rear Aircon Vents	•	•	•	•
<ul style="list-style-type: none"> <li>• Standard</li> <li>✗ Not Available</li> </ul>				
Great Wall Motor Company Limited				
For More Details, Please Visit: <a href="http://www.haval.co.za">www.haval.co.za</a>				
This Brochure Is For Reference Only And Should Be Subject To The Actual Products Available In The Local Dealer.				
If Any Change Of Data Provided, Including Product Parameters, Configurations, Body Colors, Materials.etc., Please Be Subject To The Latest Issuance.				



For more details, please go to [www.haval.co.za](http://www.haval.co.za)

This brochure is for reference only and should be subject to the actual products in the local dealer.